



Catalog: OM270706

Scan to get more validated information



AKT1 (phospho Ser473) Antibody

Catalog: OM270706

☐ 40ug ☐ 20ul ☐ 50ul ☐ 100ul

Product profile

Product name	AKT1 (phospho Ser473) Antibody
Antibody Type	Primary Antibodies
Product description	<p>AKT is a component of the PI-3 kinase pathway and is activated by phosphorylation at Ser 473 and Thr 308. AKT is a cytoplasmic protein also known as AKT1, Protein Kinase B (PKB) and rac (related to A and C kinases). AKT is a key regulator of many signal transduction pathways. AKT Exhibits tight control over cell proliferation and cell viability. Overexpression or inappropriate activation of AKT is noted in many types of cancer. AKT mediates many of the downstream events of PI 3-kinase (a lipid kinase activated by growth factors, cytokines and insulin). PI 3-kinase recruits AKT to the membrane, where it is activated by PDK1 phosphorylation. Once phos-phorylated, AKT dissociates from the membrane and phos-phorylates targets in the cytoplasm and the cell nucleus. AKT has two main roles: (i) inhibition of apoptosis; (ii) promotion of proliferation.</p>
Immunogen	AKT1 antibody was raised against a peptide located in the phospho C-Terminus aa 460 - 480 of AKT1 (Human).
Modification	p-Ser473

Key Feature

Clonality	Polyclonal
Isotype	Cocktail
Host Species	Rabbit
Tested Application	ELISA IHC WB
	AKT1 antibody can be used in ELISA starting at 1:000 - 1:1000, and immunohistochemistry starting at 5 µg/mL:
Species Reactivity	Human Mouse Rat
Concentration	1mg/ml
Purification	Affinity purified

Target Information

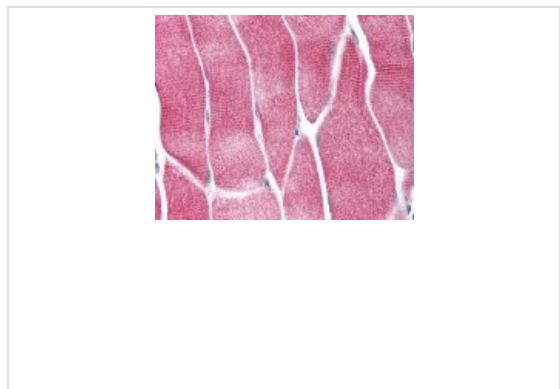
Gene Symbol	AKT1
-------------	------

	AKT1
	AKT
	AKT-1
	C-AKT
	Pan-AKT
	PKB alpha
	PKBalpha
	Proto-oncogene c-Akt
Alternative Names	Protein kinase B
	Rac protein kinase alpha
	PRKBA
	Protein kinase B alpha
	RAC-PK-alpha
	PKB
	PKB-ALPHA
	RAC
	RAC-ALPHA
Tissue Specificity	pSer473

Database Links

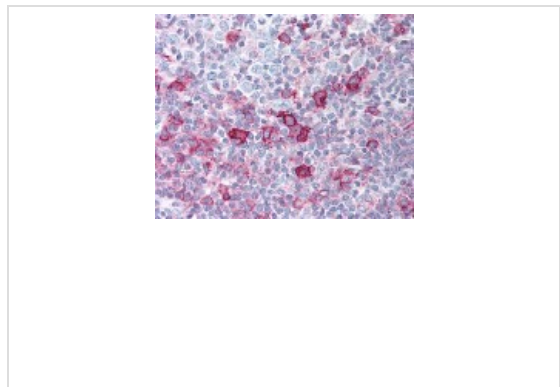
Entrez Gene	207
Protein Accession	P31749

Application



Application

Immunohistochemistry staining of AKT1 in skeletal muscle tissue using AKT1 Antibody.



Application

Immunohistochemistry staining of AKT1 in tonsil using AKT1 Antibody.

Application Notes	AKT1 antibody can be used in ELISA starting at 1:000 - 1:1000, and immunohistochemistry starting at 5 µg/mL.
-------------------	--

Additional Information

Form	Liquid
Storage Instructions	Store AKT1 antibody at 4 °C or -20 °C. As with all antibodies avoid freeze/thaw cycles.
Storage Buffer	0.02 M potassium phosphate, 0.15 M sodium chloride, pH 7.2, 0.01% sodium azide.

OmnimAbs.com

order@Omnimabs.com

506 N. GARFIELD AVE #210 ALHAMBRA, CA 91801

This product is for research use only and is not approved for use in humans or in clinical diagnosis. Primary Antibodies are guaranteed for 1 year from date of receipt
