



Catalog: OM279253

Scan to get more validated information



FTO (Fat mass and obesity related protein) Antibody

Catalog: OM279253

☐ 50ul ☐ 100ul

Product profile

| | |
|---------------|--|
| Product name | FTO (Fat mass and obesity related protein) Antibody |
| Antibody Type | Primary Antibodies |
| Immunogen | Synthetic peptide from the N-terminal region of rat Fto. |

Key Feature

| | |
|--------------------|--|
| Clonality | Monoclonal |
| Isotype | IgG |
| Host Species | Mouse |
| Tested Application | IF WB IF:1:200~1:500 WB:1:500~1:2000 Notes: Optimal dilutions/concentrations should be determined by the researcher. |
| Species Reactivity | Human Mouse Rat |
| Concentration | 1mg/ml |
| Purification | Protein G |

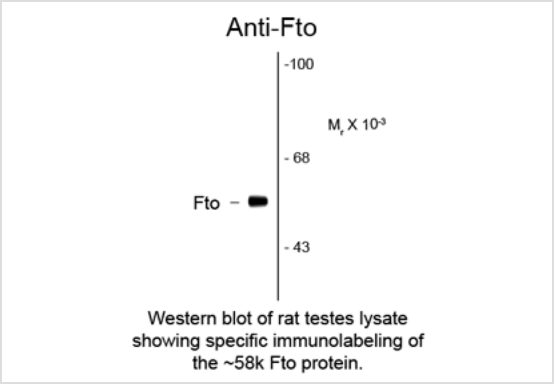
Target Information

| | |
|----------------------|---|
| Gene Symbol | FTO |
| Alternative Names | ALKBH9 KIAA1752 Fat mass and obesity-associated protein |
| Molecular Weight(MW) | 58 |

Database Links

| | |
|-------------------|--------|
| Entrez Gene | 79068 |
| Protein Accession | Q9C0B1 |

Application



Application

Western blot of rat testes lysate showing specific immunolabeling of the ~58k Fto protein.

Application Notes

IF:1:200~1:500
WB:1:500~1:2000
Notes:Optimal dilutions/concentrations should be determined by the researcher.

Additional Information

| | |
|----------------------|---|
| Form | Liquid |
| Storage Instructions | For short-term storage, store at 4° C. For long-term storage, aliquot and store at -20°C or below. Avoid multiple freeze-thaw cycles. |
| Storage Buffer | 100 uL in 10 mM HEPES (pH 7.5), 150 mM NaCl, 100 ug per mL BSA and 50% glycerol. |

OmnimAbs.com

order@Omnimabs.com
506 N. GARFIELD AVE #210 ALHAMBRA, CA 91801
This product is for research use only and is not approved for use in humans or in clinical diagnosis.Primary Antibodies are guaranteed for 1 year from date of receipt