



Catalog: OM283822

Scan to get more validated information



LSM14A Antibody

Catalog: OM283822

☐ 20ul ☐ 50ul ☐ 100ul

Product profile

Product name	LSM14A Antibody
Antibody Type	Primary Antibodies
Product description	<p>Sm-like proteins were identified in a variety of organisms based on sequence homology with the Sm protein family. Sm-like proteins contain the Sm sequence motif, which consists of 2 regions separated by a linker of variable length that folds as a loop. The Sm-like proteins are thought to form a stable heteromer present in tri-snRNP particles, which are important for pre-mRNA splicing. Sm-like proteins were identified in a variety of organisms based on sequence homology with the Sm protein family (see SNRPD2; 601061). Sm-like proteins contain the Sm sequence motif, which consists of 2 regions separated by a linker of variable length that folds as a loop. The Sm-like proteins are thought to form a stable heteromer present in tri-snRNP particles, which are important for pre-mRNA splicing. 1) Olsen, J.V., (2006) Cell 127 (3), 635-648.</p>
Immunogen	Antibody produced in rabbits immunized with a synthetic peptide corresponding a region of human LSM14A.

Key Feature

Clonality	Polyclonal
Host Species	Rabbit
Tested Application	ELISA WB
	LSM14A antibody can be used for detection of LSM14A by ELISA at 1:62500. LSM14A antibody can be used for detection of LSM14A by western blot at 1 µg/mL, and HRP conjugated secondary antibody should be diluted 1:50,000 - 100,000.:
Species Reactivity	Human Mouse Rat
Concentration	1mg/ml
Purification	Affinity purified

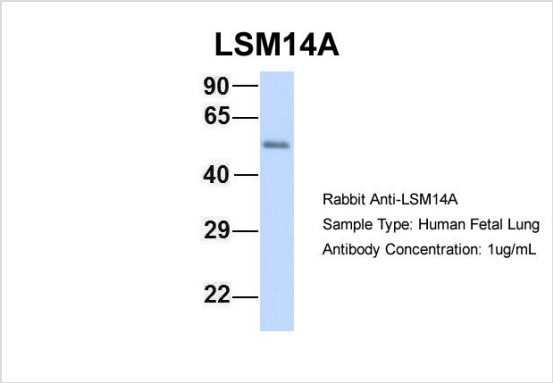
Target Information

Gene Symbol	LSM14A
Alternative Names	LSM14A C19orf13 DKFZP434D1335 FAM61A RAP55 RAP55A
Molecular Weight(MW)	50 kDa

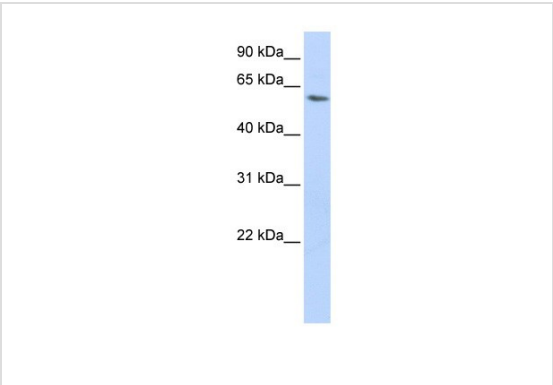
Database Links

Entrez Gene	26065
Protein Accession	NP_056393

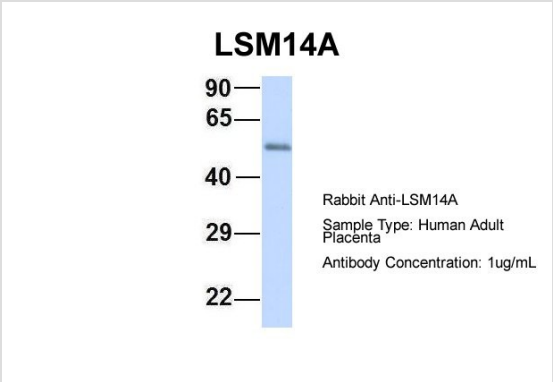
Application



Application
Antibody used in WB on Hum. Fetal Lung at 1 ug/ml.



Application
Antibody used in WB on Human HepG2 cells at 0.2-1 ug/ml.



Application
Antibody used in WB on Hum. Adult Placenta at 1 ug/ml.

Positive Control 1) Cat. No. 1211 - HepG2 Cell Lysate

Application Notes	LSM14A antibody can be used for detection of LSM14A by ELISA at 1:62500. LSM14A antibody can be used for detection of LSM14A by western blot at 1 µg/mL, and HRP conjugated secondary antibody should be diluted 1:50,000 - 100,000.:
-------------------	---

Additional Information

Form	Liquid
Storage Instructions	For short periods of storage (days) store at 4°C. For longer periods of storage, store LSM14A antibody at -20°C. As with any antibody avoid repeat freeze-thaw cycles.
Storage Buffer	Antibody is lyophilized in PBS buffer with 2% sucrose. Add 50 µL of distilled water. Final antibody concentration is 1 mg/mL.

order@Omnimabs.com
506 N. GARFIELD AVE #210 ALHAMBRA, CA 91801
This product is for research use only and is not approved for use in humans or in clinical diagnosis.Primary Antibodies are guaranteed for 1 year from date of receipt
