



Catalog: OM289234

Scan to get more validated information



PTPRC Antibody [SPM496]

Catalog: OM289234

☐ 50ul ☐ 100ul

Product profile

Product name	PTPRC Antibody [SPM496]
Antibody Type	Primary Antibodies
Immunogen	Stimulated human leucocytes

Key Feature

Clonality	Monoclonal
Isotype	IgG1, k
Host Species	Mouse
Tested Application	IHC
PTPRC antibody can be used in ELISA, Western Blot, and immunohistochemistry starting at 10 µg/mL.	
Species Reactivity	Human
Concentration	1mg/ml
Purification	Protein G

Target Information

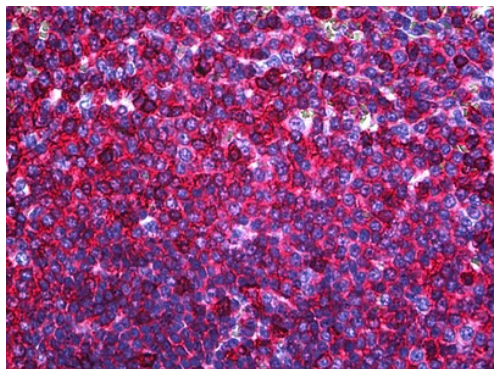
Gene Symbol	PTPRC
Alternative Names	PTPRC
	B220
	CD45R
	CD45
	gp180
	Leukocyte common antigen
	L-CA
	Leucocyte common antigen
	LY5
	T200
	T200 glycoprotein
	T200 leukocyte common antigen
	CD45 antigen
	LCA

Database Links

Entrez Gene 5788

Protein Accession P08575

Application



Application

Immunohistochemistry of human spleen tissue stained using PTPRC Monoclonal Antibody.

Application Notes PTPRC antibody can be used in ELISA, Western Blot, and immunohistochemistry starting at 10 µg/mL.

Additional Information

Form Liquid

Storage Instructions Store PTPRC antibody at 2 °C to 8 °C degrees. Do not freeze.

Storage Buffer 10 mM PBS, 1% BSA buffer pH 7.4 with 0.1% sodium azide.

OmnimAbs.com

order@Omnimabs.com

506 N. GARFIELD AVE #210 ALHAMBRA, CA 91801

This product is for research use only and is not approved for use in humans or in clinical diagnosis. Primary Antibodies are guaranteed for 1 year from date of receipt