



Catalog: OM289616

Scan to get more validated information



RBM11 Antibody

Catalog: OM289616

☐ 20ul ☐ 50ul ☐ 100ul

Product profile

Product name	RBM11 Antibody
Antibody Type	Primary Antibodies
Product description	RBM11, also known as RNA binding motif protein 11, is a human gene. 2 isoforms of the human protein are produced by alternative splicing.1) Wang, A.G., et al. Biochem. Biophys. Res. Commun. 345(3):1022-1032(2006)
Immunogen	This RBM11 antibody is generated from rabbits immunized with a KLH conjugated synthetic peptide between 28-54 amino acids from the N-terminal region of human RBM11.

Key Feature

Clonality	Polyclonal
Isotype	Ig
Host Species	Rabbit
Tested Application	WB
For WB starting dilution is: 1:1000:	
Species Reactivity	Human
Concentration	1mg/ml
Purification	Affinity purified

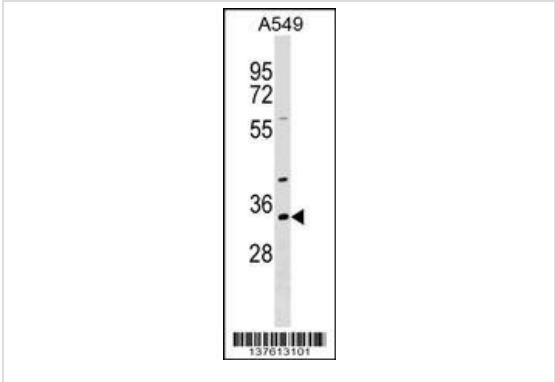
Target Information

Gene Symbol	RBM11
Alternative Names	Splicing regulator RBM11 RNA-binding motif protein 11 RBM11
Molecular Weight(MW)	32 kDa

Database Links

Entrez Gene	54033
Protein Accession	P57052

Application



Application

Western blot analysis in A549 cell line lysates (35ug/lane).

Application Notes

For WB starting dilution is: 1:1000:

Additional Information

Form Liquid

Storage Instructions Store at 4°C for three months and -20°C, stable for up to one year. As with all antibodies care should be taken to avoid repeated freeze thaw cycles. Antibodies should not be exposed to prolonged high temperatures.

Storage Buffer Supplied in PBS with 0.09% (W/V) sodium azide.

OmnimAbs.com

order@Omnimabs.com
506 N. GARFIELD AVE #210 ALHAMBRA, CA 91801
This product is for research use only and is not approved for use in humans or in clinical diagnosis.Primary Antibodies are guaranteed for 1 year from date of receipt