



Catalog: OM114605

Scan to get more validated information



Rabbit anti-CENPB polyclonal antibody - C-terminal region

Catalog: OM114605

☐ 20ul ☐ 50ul ☐ 100ul

Product profile

Product name	Rabbit anti-CENPB polyclonal antibody - C-terminal region
Antibody Type	Primary Antibodies
Immunogen	The immunogen for anti-CENPB antibody: synthetic peptide directed towards the C terminal of human CENPB
Modification	Unmodification

Key Feature

Clonality	Polyclonal
Isotype	IgG
Host Species	Rabbit
Tested Application	WB WB: 1:500~1:2000 Notes: Optimal dilutions/concentrations should be determined by the researcher.
Species Reactivity	Dog Horse Human Mouse Pig Rat Sheep
Concentration	1mg/ml
Purification	Affinity purified

Target Information

Gene Symbol	CENPB
Gene Synonyms	-
Gene Full Name	Centromere protein B, 80kDa

Gene Summary

CENPB is a highly conserved protein that facilitates centromere formation. It is a DNA-binding protein that is derived from transposases of the pogo DNA transposon family. It contains a helix-loop-helix DNA binding motif at the N-terminus, and a dimerization domain at the C-terminus. This protein is proposed to play an important role in the assembly of specific centromere structures in interphase nuclei and on mitotic chromosomes. It is also considered a major centromere autoantigen recognized by sera from patients with anti-centromere antibodies. This gene product is a highly conserved protein that facilitates centromere formation. It is a DNA-binding protein that is derived from transposases of the pogo DNA transposon family. It contains a helix-loop-helix DNA binding motif at the N-terminus, and a dimerization domain at the C-terminus. The DNA binding domain recognizes and binds a 17-bp sequence (CENP-B box) in the centromeric alpha satellite DNA. This protein is proposed to play an important role in the assembly of specific centromere structures in interphase nuclei and on mitotic chromosomes. It is also considered a major centromere autoantigen recognized by sera from patients with anti-centromere antibodies. Publication Note: This RefSeq record includes a subset of the publications that are available for this gene. Please see the Entrez Gene record to access additional publications.

Molecular Weight(MW) 65kDa

Sequence 599 amino acids

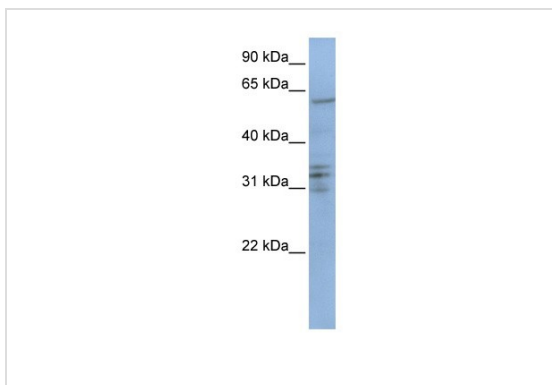
Database Links

Entrez Gene [1059](#)

SwissProt ID [P07199](#)

Protein Accession [NP_001801](#)

Application



Western blot

0.2-1 ug/ml ELISA Titer: 1:500 Positive Control: Jurkat cell lysate

Application Notes

WB: 1:500~1:2000

Notes: Optimal dilutions/concentrations should be determined by the researcher.

Additional Information

Form Liquid

Storage Instructions Aliquot and store at -20°C. Avoid repeated freeze / thaw cycles

Storage Buffer phosphate buffered saline , pH 7.4, 150mM NaCl, 0.02% sodium azide and 50% glycerol.

OmnimAbs.com

order@Omnimabs.com

506 N. GARFIELD AVE #210 ALHAMBRA, CA 91801

This product is for research use only and is not approved for use in humans or in clinical diagnosis. Primary Antibodies are guaranteed for 1 year from date of receipt

