



Catalog: OM114680

Scan to get more validated information



Rabbit anti-Bckdk polyclonal antibody - N-terminal region

Catalog: OM114680

☐ 20ul ☐ 50ul ☐ 100ul

Product profile

Product name	Rabbit anti-Bckdk polyclonal antibody - N-terminal region
Antibody Type	Primary Antibodies
Modification	Unmodification

Key Feature

Clonality	Polyclonal
Isotype	IgG
Host Species	Rabbit
Tested Application	WB WB:1:500~1:2000 Notes: Optimal dilutions/concentrations should be determined by the researcher.
Species Reactivity	Dog Human Mouse Pig
Concentration	1mg/ml
Purification	Affinity purified

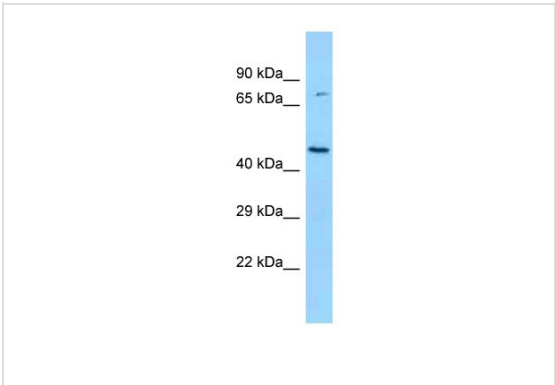
Target Information

Gene Symbol	Bckdk
Gene Synonyms	-
Gene Full Name	Branched chain ketoacid dehydrogenase kinase
Gene Summary	Bckdk is a mitochondrial kinase; It is involved in oxidative degradation of branched-chain amino acids.
Molecular Weight(MW)	45kDa
Sequence	412 amino acids

Database Links

Entrez Gene	29603
SwissProt ID	Q00972
Protein Accession	NP_062117

Application



Western blot

Titration: 1.0 ug/ml Positive Control: Rat Brain

Application Notes

WB:1:500~1:2000

Notes:Optimal dilutions/concentrations should be determined by the researcher.

Additional Information

Form	Liquid
Storage Instructions	Aliquot and store at -20°C. Avoid repeated freeze / thaw cycles
Storage Buffer	phosphate buffered saline , pH 7.4, 150mM NaCl, 0.02% sodium azide and 50% glycerol.

OmnimAbs.com

order@Omnimabs.com
506 N. GARFIELD AVE #210 ALHAMBRA, CA 91801
This product is for research use only and is not approved for use in humans or in clinical diagnosis.Primary Antibodies are guaranteed for 1 year from date of receipt