



Catalog: OM270009

Scan to get more validated information



ADRA2B Antibody

Catalog: OM270009

☐ 20ul ☐ 50ul ☐ 100ul

Product profile

Product name	ADRA2B Antibody
Antibody Type	Primary Antibodies
Product description	<p>Alpha-2-adrenergic receptors are members of the G protein-coupled receptor superfamily. They include 3 highly homologous subtypes: alpha2A, alpha2B, and alpha2C. These receptors have a critical role in regulating neurotransmitter release from sympathetic nerves and from adrenergic neurons in the central nervous system. Alpha 2B adrenergic receptor subtype was observed to associate with eIF-2B, a guanine nucleotide exchange protein that functions in regulation of translation. A polymorphic variant of the alpha2B subtype, which lacks 3 glutamic acids from a glutamic acid repeat element, was identified to have decreased G protein-coupled receptor kinase-mediated phosphorylation and desensitization; this polymorphic form is also associated with reduced basal metabolic rate in obese subjects and may therefore contribute to the pathogenesis of obesity. Alpha 2B adrenergic receptor gene contains no introns in either its coding or untranslated sequences. 1) Tabakoff,B., et.al., BMC Biol. 7, 70 (2009) Weinshank,R.L., et.al. Mol. Pharmacol. 38 (5), 681-688 (1990)</p>
Immunogen	<p>This ADRA2B antibody is generated from rabbits immunized with a KLH conjugated synthetic peptide between 343-369 amino acids from the Central region of human ADRA2B.</p>

Key Feature

Clonality	Polyclonal
Isotype	Ig
Host Species	Rabbit
Tested Application	<div>FACS IF IHC-P WB</div> <p>For WB starting dilution is: 1:1000 For IHC-P starting dilution is: 1:50~100 For FACS starting dilution is: 1:10~50 For IF starting dilution is: 1:10~50:</p>
Species Reactivity	Human
Concentration	1mg/ml
Purification	Affinity purified

Target Information

Gene Symbol ADRA2B

Alternative Names

Alpha-2B adrenergic receptor
Alpha-2 adrenergic receptor subtype C2
Alpha-2B adrenoreceptor
Alpha-2B adrenoceptor
Alpha-2BAR
ADRA2B
ADRA2L1
ADRA2RL1

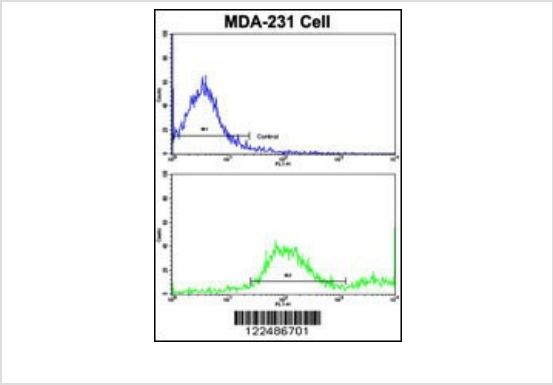
Molecular Weight(MW) 50 kDa

Database Links

Entrez Gene 151

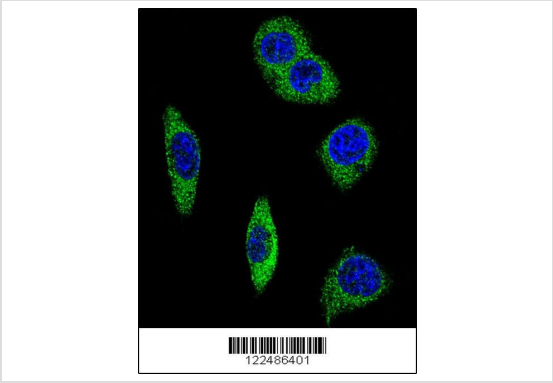
Protein Accession P18089

Application



Application

Flow cytometric analysis of MDA-231 cells using ADRA2B Antibody (bottom histogram) compared to a negative control cell (top histogram). FITC-conjugated goat-anti-rabbit secondary antibodies were used for the analysis.



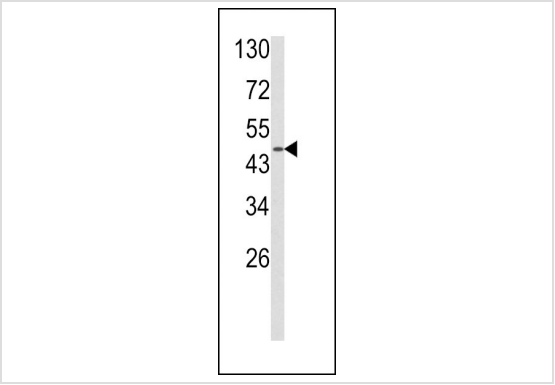
Application

Confocal immunofluorescent analysis of ADRA2B Antibody with MDA-MB231 cell followed by Alexa Fluor 488-conjugated goat anti-rabbit IgG (green). DAPI was used to stain the cell nuclear (blue).



Application

Formalin-fixed and paraffin-embedded human breast carcinoma with ADRA2B Antibody, which was peroxidase-conjugated to the secondary antibody, followed by DAB staining.



Application

Western blot analysis of ADRA2B Antibody in MDA-MB231 cell line lysates (35ug/lane)

Application Notes

For WB starting dilution is: 1:1000 For IHC-P starting dilution is: 1:50~100 For FACS starting dilution is: 1:10~50 For IF starting dilution is: 1:10~50:

Additional Information

Form	Liquid
Storage Instructions	Store at 4°C for three months and -20°C, stable for up to one year. As with all antibodies care should be taken to avoid repeated freeze thaw cycles. Antibodies should not be exposed to prolonged high temperatures.
Storage Buffer	Supplied in PBS with 0.09% (W/V) sodium azide.

OmnimAbs.com

order@Omnimabs.com
506 N. GARFIELD AVE #210 ALHAMBRA, CA 91801
This product is for research use only and is not approved for use in humans or in clinical diagnosis.Primary Antibodies are guaranteed for 1 year from date of receipt