



Catalog: OM270012

Scan to get more validated information



ADRB2 Antibody

Catalog: OM270012

☐ 20ul ☐ 50ul ☐ 100ul

Product profile

Product name	ADRB2 Antibody
Antibody Type	Primary Antibodies
Product description	ADRB2, beta-2-adrenergic receptor which is a member of the G protein-coupled receptor superfamily. This receptor is directly associated with one of its ultimate effectors, the class C L-type calcium channel Ca(V)1.2. This receptor-channel complex also contains a G protein, an adenylyl cyclase, cAMP-dependent kinase, and the counterbalancing phosphatase, PP2A. The assembly of the signaling complex provides a mechanism that ensures specific and rapid signaling by this G protein-coupled receptor. This protein is intronless.1) Kobilka B.K., Dixon R.A.F.Proc. Natl. Acad. Sci. U.S.A. 84:46-50(1987)
Immunogen	This ADRB2 antibody is generated from rabbits immunized with a KLH conjugated synthetic peptide between 345-373 amino acids from human ADRB2.

Key Feature

Clonality	Polyclonal
Isotype	Ig
Host Species	Rabbit
Tested Application	FACS IHC-P WB
	For WB starting dilution is: 1:1000 For IHC-P starting dilution is: 1:50~100 For FACS starting dilution is: 1:10~50:
Species Reactivity	Human
Concentration	1mg/ml
Purification	Affinity purified

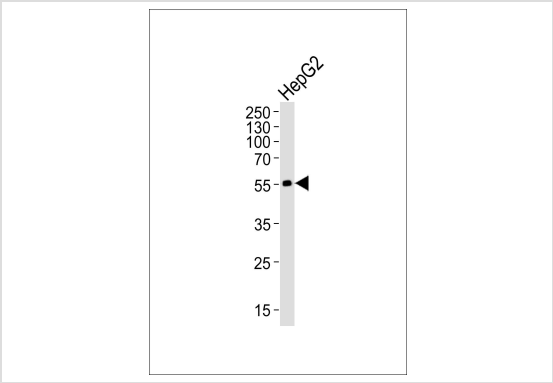
Target Information

Gene Symbol	ADRB2
Alternative Names	Beta-2 adrenergic receptor Beta-2 adrenoreceptor Beta-2 adrenoceptor ADRB2 ADRB2R B2AR
Molecular Weight(MW)	46 kDa

Database Links

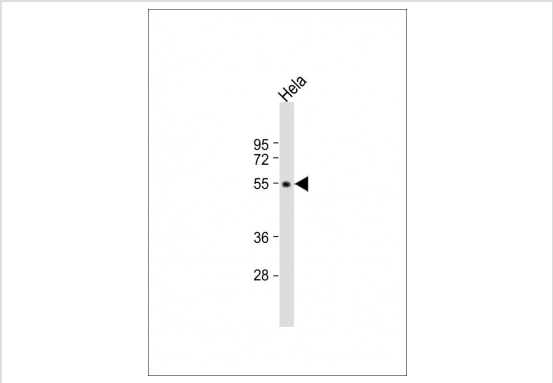
Entrez Gene	154
Protein Accession	P07550

Application



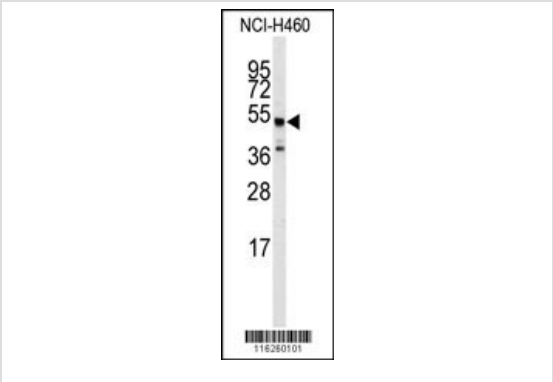
Application

Western blot analysis of lysate from HepG2 cell line, using ADRB2 Antibody (S364) at 1:1000.



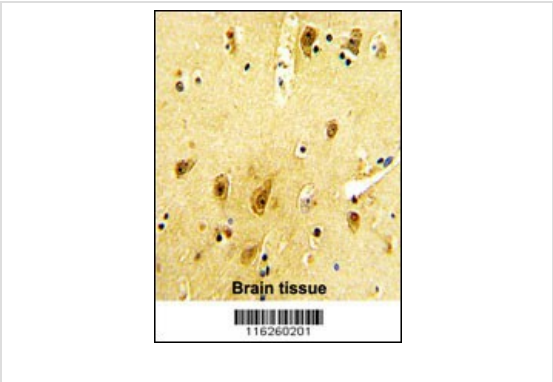
Application

Western Blot at 1:1000 dilution + HeLa whole cell lysate Lysates/proteins at 20 ug per lane.



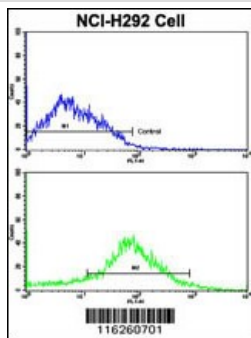
Application

Western blot analysis of anti-ADRB2 Antibody (S364) in NCI-H460 cell line lysates (35ug/lane)



Application

Formalin-fixed and paraffin-embedded human brain reacted with ADRB2 Antibody (S364), which was peroxidase-conjugated to the secondary antibody, followed by DAB staining.



Application

Flow cytometric analysis of NCI-H292 cells using ADRB2 Antibody (S364) (bottom histogram) compared to a negative control cell (top histogram). FITC-conjugated goat-anti-rabbit secondary antibodies were used for the analysis.

Application Notes

For WB starting dilution is: 1:1000 For IHC-P starting dilution is: 1:50~100 For FACS starting dilution is: 1:10~50:

Additional Information

Form

Liquid

Storage Instructions

Store at 4°C for three months and -20°C, stable for up to one year. As with all antibodies care should be taken to avoid repeated freeze thaw cycles. Antibodies should not be exposed to prolonged high temperatures.

Storage Buffer

Supplied in PBS with 0.09% (W/V) sodium azide.

OmnimAbs.com

order@Omnimabs.com

506 N. GARFIELD AVE #210 ALHAMBRA, CA 91801

This product is for research use only and is not approved for use in humans or in clinical diagnosis. Primary Antibodies are guaranteed for 1 year from date of receipt