



Catalog: OM271748

Scan to get more validated information



ASMT Antibody

Catalog: OM271748

☐ 20ul ☐ 50ul ☐ 100ul

Product profile

Product name	ASMT Antibody
Antibody Type	Primary Antibodies
Product description	ASMT belongs to the methyltransferase superfamily, and is located in the pseudoautosomal region (PAR) at the end of the short arms of the X and Y chromosomes. The encoded enzyme catalyzes the final reaction in the synthesis of melatonin, and is abundant in the pineal gland.1) Melke, J., et al. Mol. Psychiatry 13(1):90-98(2008)
Immunogen	This ASMT antibody is generated from rabbits immunized with a KLH conjugated synthetic peptide between 212-241 amino acids from the Central region of human ASMT.

Key Feature

Clonality	Polyclonal
Isotype	Ig
Host Species	Rabbit
Tested Application	FACS IHC-P WB For WB starting dilution is: 1:500-1:1000 For IHC-P starting dilution is: 1:10~50 For FACS starting dilution is: 1:10~50:
Species Reactivity	Human
Concentration	1mg/ml
Purification	Affinity purified

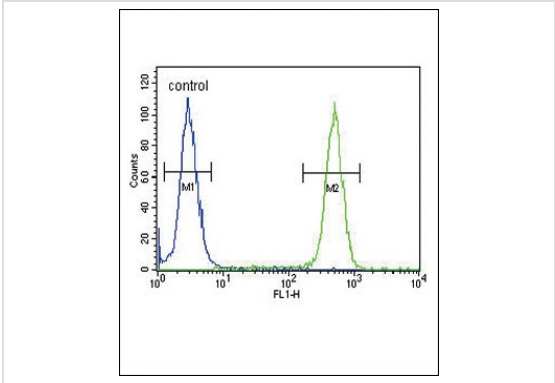
Target Information

Gene Symbol	ASMT
Alternative Names	Acetylserotonin O-methyltransferase Hydroxyindole O-methyltransferase HIOMT ASMT
Molecular Weight(MW)	38 kDa

Database Links

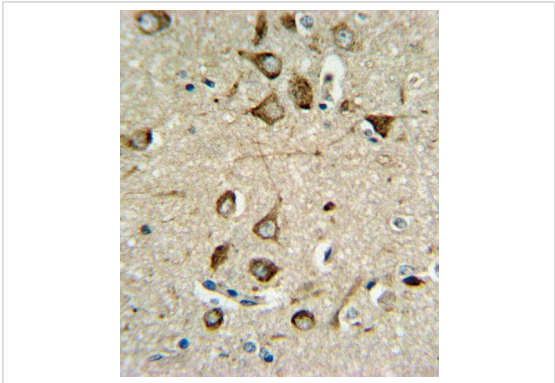
Entrez Gene [438](#)

Application



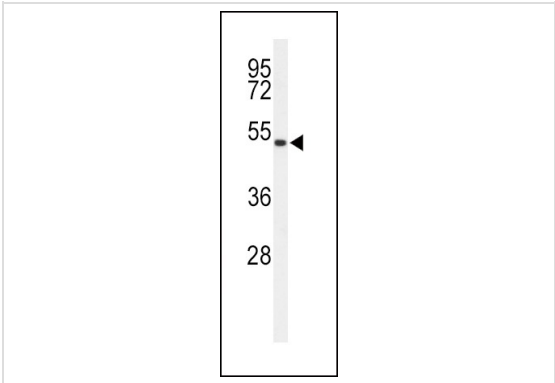
Application

Flow cytometric analysis of 293 cells (right histogram) compared to a negative control cell (left histogram). FITC-conjugated goat-anti-rabbit secondary antibodies were used for the analysis.



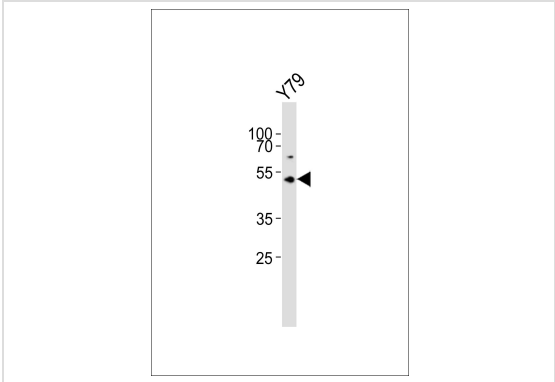
Application

ASMT Antibody IHC analysis in formalin fixed and paraffin embedded brain tissue followed by peroxidase conjugation of the secondary antibody and DAB staining.



Application

Western blot analysis of ASMT Antibody in 293 cell line lysates (35ug/lane)



Application

Western blot analysis of lysate from Y79 cell line, using ASMT Antibody at 1:1000.

Application Notes

For WB starting dilution is: 1:500-1:1000 For IHC-P starting dilution is: 1:10~50 For FACS starting dilution is: 1:10~50:

Additional Information

Storage Instructions

Store at 4°C for three months and -20°C, stable for up to one year. As with all antibodies care should be taken to avoid repeated freeze thaw cycles. Antibodies should not be exposed to prolonged high temperatures.

Storage Buffer

Supplied in PBS with 0.09% (W/V) sodium azide.

OmnimAbs.com

order@Omnimabs.com

506 N. GARFIELD AVE #210 ALHAMBRA, CA 91801

This product is for research use only and is not approved for use in humans or in clinical diagnosis. Primary Antibodies are guaranteed for 1 year from date of receipt
