



Catalog: OM275624

Scan to get more validated information



# CLDN18 Antibody

Catalog: OM275624

☐ 20ul ☐ 50ul ☐ 100ul

## Product profile

Product name	CLDN18 Antibody
Antibody Type	Primary Antibodies
Product description	CLDN18 plays a major role in tight junction-specific obliteration of the intercellular space, through calcium-independent cell-adhesion activity. CLDN18 belongs to the large claudin family of proteins, which form tight junction strands in epithelial cells (Niimi et al., 2001 [PubMed 11585919]). 1) Karanjawala, Z.E., (2008) Am. J. Surg. Pathol. 32 (2), 188-196 .
Immunogen	Antibody produced in rabbits immunized with a synthetic peptide corresponding a region of human CLDN18.

## Key Feature

Clonality	Polyclonal
Host Species	Rabbit
Tested Application	<b>ELISA</b> <b>WB</b>
	CLDN18 antibody can be used for detection of CLDN18 by ELISA at 1:62500. CLDN18 antibody can be used for detection of CLDN18 by western blot at 1 µg/mL, and HRP conjugated secondary antibody should be diluted 1:50,000 - 100,000.:
Species Reactivity	<b>Human</b>
Concentration	1mg/ml
Purification	Affinity purified

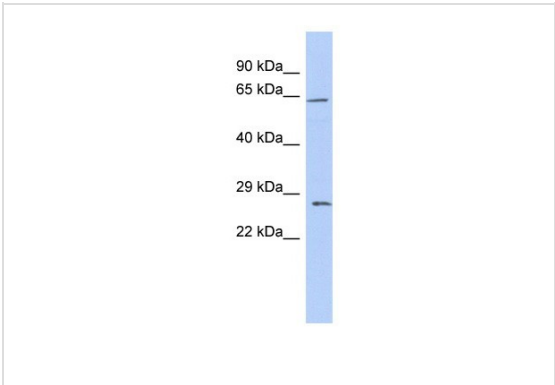
## Target Information

Gene Symbol	CLDN18
Alternative Names	CLDN18 SFTA5 SFTPJ
Molecular Weight(MW)	28 kDa

## Database Links

Entrez Gene	51208
Protein Accession	NP_057453

# Application



## Application

Antibody used in WB on Human Thymus at 0.2-1 ug/ml.

**Positive Control** 1) Cat. No. XBL-10426 - Fetal Thymus Tissue Lysate

**Application Notes** CLDN18 antibody can be used for detection of CLDN18 by ELISA at 1:62500. CLDN18 antibody can be used for detection of CLDN18 by western blot at 1 µg/mL, and HRP conjugated secondary antibody should be diluted 1:50,000 - 100,000.:

## Additional Information

<b>Form</b>	Liquid
<b>Storage Instructions</b>	For short periods of storage (days) store at 4°C. For longer periods of storage, store CLDN18 antibody at -20°C. As with any antibody avoid repeat freeze-thaw cycles.
<b>Storage Buffer</b>	Antibody is lyophilized in PBS buffer with 2% sucrose. Add 50 µL of distilled water. Final antibody concentration is 1 mg/mL.

# OmnimAbs.com

order@Omnimabs.com  
506 N. GARFIELD AVE #210 ALHAMBRA, CA 91801  
This product is for research use only and is not approved for use in humans or in clinical diagnosis. Primary Antibodies are guaranteed for 1 year from date of receipt