



Catalog: OM277740

Scan to get more validated information



# eIF2a Antibody

Catalog: OM277740

☐ 20ul ☐ 50ul ☐ 100ul

## Product profile

Product name	eIF2a Antibody
Antibody Type	Primary Antibodies
Product description	Functions in the early steps of protein synthesis by forming a ternary complex with GTP and initiator tRNA. This complex binds to a 40S ribosomal subunit, followed by mRNA binding to form a 43S preinitiation complex. Junction of the 60S ribosomal subunit to form the 80S initiation complex is preceded by hydrolysis of the GTP bound to eIF-2 and release of an eIF-2-GDP binary complex. In order for eIF-2 to recycle and catalyze another round of initiation, the GDP bound to eIF-2 must exchange with GTP by way of a reaction catalyzed by eIF-2B.1) Xavier Saelens, et, al. (2001) J. Biol. Chem; 276: 41620 - 41628. Hong-Li Wu, Yu-Hua Li, Yan-Hua Lin, et al. (2008) Salvianolic acid B protects human endothelial cells from oxidative stress damage: a possible protective role of glucose-regulated protein 78 induction Cardiovasc Res doi:10.1093/cvr/cvn262.
Immunogen	eIF2a (Ab-51) antibody was raised against a peptide sequence around aa.49~53 (E-L-S-R-R) derived from Human eIF2α.

## Key Feature

Clonality	Polyclonal
Host Species	Rabbit
Tested Application	<span>IF</span> <span>IHC</span> <span>WB</span>
	Western Blot: 1:500~1:1000, Immunohistochemistry: 1:50~1:100, Immunofluorescence: 1:100~1:200:
Species Reactivity	<span>Human</span> <span>Mouse</span> <span>Rat</span>
Concentration	1mg/ml
Purification	Affinity purified

## Target Information

Gene Symbol	EIF2S1
Alternative Names	EIF2 EIF-2 EIF2A EIF-2A EIF-2alpha BHLHA39 DERMO1 Eukaryotic translation initiation factor 2 subunit alpha
Molecular Weight(MW)	38 kDa

**Tissue Specificity**

This antibody detects endogenous level of total eIF2 $\alpha$  protein.

## Database Links

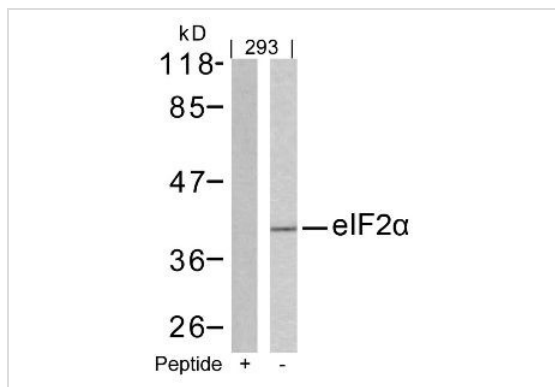
**Entrez Gene**

1965

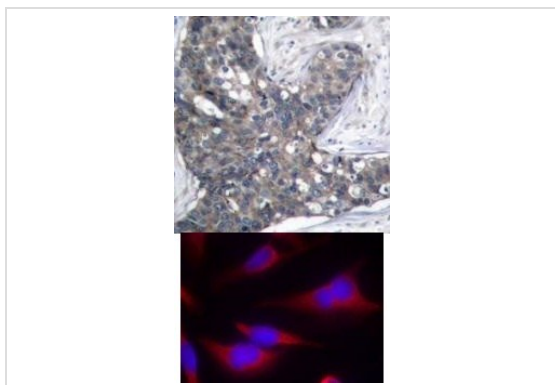
**Protein Accession**

NP\_004085.1

## Application

**Application**

Western blot analysis of lysed extracts from 293 cells using eIF2 $\alpha$  (Ab-51).

**Application**

Top Image: Immunohistochemical analysis of paraffin-embedded human breast carcinoma tissue using eIF2 $\alpha$  (Ab-51). Bottom Image: Immunofluorescence staining of methanol-fixed HeLa cells using eIF2 $\alpha$  (Ab-51).

**Application Notes**

Western Blot: 1:500~1:1000, Immunohistochemistry: 1:50~1:100, Immunofluorescence: 1:100~1:200:

## Additional Information

**Form**

Liquid

**Storage Instructions**

Store antibody at -20°C for up to one year.

**Storage Buffer**

Antibody supplied in phosphate buffered saline (without Mg<sup>2+</sup> and Ca<sup>2+</sup>), pH 7.4, 150mM NaCl, 0.02% sodium azide and 50% glycerol.

# OmnimAbs.com

order@Omnimabs.com

506 N. GARFIELD AVE #210 ALHAMBRA, CA 91801

This product is for research use only and is not approved for use in humans or in clinical diagnosis. Primary Antibodies are guaranteed for 1 year from date of receipt