



Catalog: OM285787

Scan to get more validated information



NAP1L1 Antibody

Catalog: OM285787

☐ 20ul ☐ 50ul ☐ 100ul

Product profile

Product name	NAP1L1 Antibody
Antibody Type	Primary Antibodies
Product description	NAP1L1 is a member of the nucleosome assembly protein (NAP) family. This protein participates in DNA replication and may play a role in modulating chromatin formation and contribute to the regulation of cell proliferation.1) Rehtanz, M., et al., Mol. Cell. Biol. 24(5):2153-2168 (2004). Simon, H.U., et al., Biochem. J. 297 (PT 2), 389-397 (1994) (): ().
Immunogen	This NAP1L1 antibody is generated from rabbits immunized with a KLH conjugated synthetic peptide between 352-381 amino acids from the C-terminal region of human NAP1L1.

Key Feature

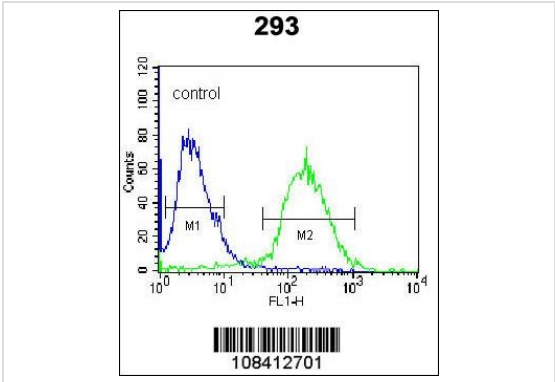
Clonality	Polyclonal
Isotype	Ig
Host Species	Rabbit
Tested Application	FACS WB
For WB starting dilution is: 1:1000 For FACS starting dilution is: 1:10~50	
Species Reactivity	Human
Concentration	1mg/ml
Purification	Unpurified

Target Information

Gene Symbol	NAP1L1
Alternative Names	Nucleosome assembly protein 1-like 1 NAP-1-related protein hNRP NAP1L1 NRP
Molecular Weight(MW)	45 kDa
Sequence Similarities	Predicted species reactivity based on immunogen sequence: Bovine

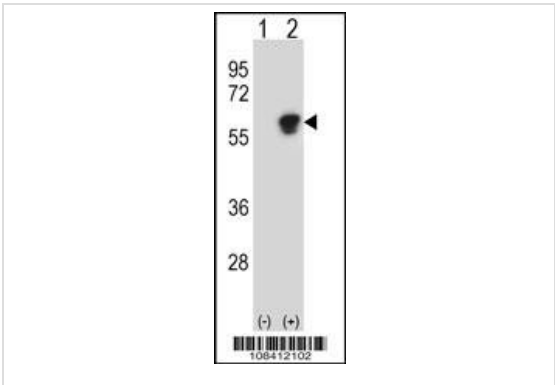
Database Links

Application



Application

Flow cytometric analysis of 293 cells (right histogram) compared to a negative control cell (left histogram). FITC-conjugated goat-anti-rabbit secondary antibodies were used for the analysis.



Application

Western blot analysis of NAP1L1 using rabbit polyclonal NAP1L1 Antibody using 293 cell lysates (2 ug/lane) either nontransfected (Lane 1) or transiently transfected (Lane 2) with the NAP1L1 gene.

Application Notes For WB starting dilution is: 1:1000 For FACS starting dilution is: 1:10~50

Additional Information

Form	Liquid
Storage Instructions	Store at 4°C for three months and -20°C, stable for up to one year. As with all antibodies care should be taken to avoid repeated freeze thaw cycles. Antibodies should not be exposed to prolonged high temperatures.
Storage Buffer	Supplied in PBS with 0.09% (W/V) sodium azide.

OmnimAbs.com